



# Birtley House



**RESIDENTS' ENTERTAINMENT PROGRAMME**

**February 2012**

Wednesday 1<sup>st</sup> February  
10.30 – 11.30am

**P.A.T. (Pets As Therapy) DOG VISIT**  
Claire and Theo (cocker spaniel) will be visiting this morning.

2.30pm Activity Room

**“SOME ENCHANTED EVENING”** –  
a DVD featuring songs from well-known musicals. Followed by afternoon tea.

2.30pm Annexe Sitting Room **MASS WITH FATHER DAVID**  
Followed by afternoon tea.

## ADVANCE NOTICES



**Thursday**  
**22<sup>nd</sup> March 2012**

Outing to Guildford  
Cathedral with a  
Guided Tour

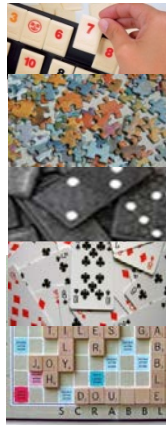
followed by tea in the Refectory.  
Numbers are limited so book early.

## SPECIAL REQUEST:

We need your baby  
or “early years” photos  
for our activity on  
**Monday 20<sup>th</sup>**  
**February.**



Thursday 2<sup>nd</sup> February  
2.30pm Activity Room



### **MULTI-ACTIVITIES**

Scrabble, Rummikub, Cards, Jigsaws, Dominoes, Bagatelle – Just a few ideas for you to choose from. Art materials are also available. Followed by afternoon tea.

Friday 3<sup>rd</sup> February  
2.30pm Activity Room

### **GENERAL KNOWLEDGE QUIZ with plenty of clues to assist you!**

Followed by afternoon tea.



Sunday 5<sup>th</sup> February  
2.30pm Mews Dining Room

### **KNITTING GROUP GET-TOGETHER**

Followed by afternoon tea.

Monday 6<sup>th</sup> February  
2.30pm Activity Room



### **AVON DEMONSTRATION**

by Jane Edwards and a chance to place an order.

Followed by afternoon tea.

Tuesday 7<sup>th</sup> February  
2.30pm Activity Room

### **RE-DO OUR BOARD WITH A SPRING-LIKE THEME**

Followed by afternoon tea.



2.00pm – 5.00pm

Manicure sessions for residents

Wednesday 8<sup>th</sup> February  
2.30pm Activity Room



**NURSERY RHYMES  
PICTURE QUIZ**

eg. Who stole a pig and  
away did run?  
Who pulled out a plum?  
Come and help us all  
recite them too.

2.00pm – 5.00pm

Manicure sessions for residents

Thursday 9<sup>th</sup> February

**CHIROPODIST & PODIATRIST**

Gaby Beal visits from 9.00am

2.30pm Activity Room

**A-Z OF  
FLOWERS**

How many  
do you  
know?

Followed by  
afternoon tea.



Friday 10<sup>th</sup> February  
2.30pm Activity Room

**“WHAT THE DICKENS...”  
BOOK CLUB WITH ANN**

**GIRL FRIDAY WITH CAROL**

Followed by afternoon tea.

Monday 13<sup>th</sup> February  
2.30pm Activity Room

**GENTLE EXERCISES TO MUSIC**

Followed by afternoon tea.

Tuesday 14<sup>th</sup> February  
2.30pm Activity Room



**YOUR FAVOURITE  
LOVE SONGS  
FOR VALENTINE'S DAY**

Followed by a  
"HEARTY" tea.

2.00pm – 5.00pm

Manicure sessions for residents

Wednesday 15<sup>th</sup> February  
10.00 – 11.00am

**P.A.T. (Pets As Therapy) DOG VISIT**  
Claire and Theo (cocker spaniel) will be  
visiting this morning

2.30pm Activity Room



**DVD "THE EAGLE  
ODYSSEY" –**  
celebrating the return  
to Scotland of the UK's  
biggest bird of prey

Followed by afternoon tea.

2.00pm – 5.00pm

Manicure sessions for residents

Thursday 16<sup>th</sup> February  
2.30pm Activity Room

**HOLY COMMUNION with the Revd  
Camilla White**

Friends and family are  
welcome to join us.  
Followed by afternoon  
tea.



Friday 17<sup>th</sup> February  
2.30pm Activity Room

**FAMOUS PEOPLE WHOSE  
NAMES BEGIN WITH "M"**

Followed by afternoon tea.

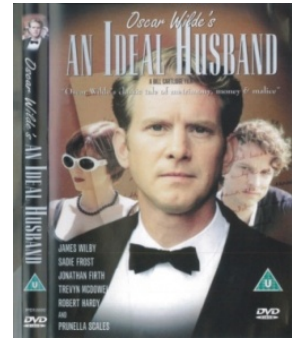


Saturday 18<sup>th</sup> February  
2.15pm Activity Room

**SATURDAY CINEMA:**  
**OSCAR WILDE'S**  
**"AN IDEAL HUSBAND"** (2003)

starring James Wilby,  
Robert Hardy &  
Prunella Scales.

Followed by afternoon tea.



Monday 20<sup>th</sup> February  
2.30pm Activity Room



**OUR EARLY YEARS -**  
**GUESS WHO**  
**FROM THE PHOTOS**

Followed by  
afternoon tea.

2.30pm Mews Dining Room

**KNITTING GROUP GET-TOGETHER**

Followed by afternoon tea.

Tuesday 21<sup>st</sup> February  
2.30pm Activity Room

**SHROVE TUESDAY**  
**TRADITIONS**  
with our annual  
pancake tossing  
competition.

Followed by  
afternoon tea.



2.00pm – 5.00pm

Manicure sessions for residents

Wednesday 22<sup>nd</sup> February  
2.30pm Activity Room

**INDOOR GAMES**

Followed by afternoon tea.

Thursday 23<sup>rd</sup> February  
2.30pm Activity Room



**VISIT BY  
PATRICIA BLAND  
(Area Coordinator for  
P.A.T Dogs) &  
HER DOG SYRAH**

Followed by afternoon tea.

Friday 24<sup>th</sup> February  
2.30pm Activity Room

### **WHAT IS IT WORTH?**

Our game of valuations but no cheque books required! Followed by afternoon tea.



Monday 27<sup>th</sup> February  
2.30pm Activity Room



**MUSICAL RECITAL  
BY KEVIN JACOT  
ON THE PIANO**

Followed by  
afternoon tea.

Tuesday 28<sup>th</sup> February  
2.30pm Activity Room

**MEMORY GAME –  
WHAT'S ON THE TRAY?**

Followed by afternoon tea.

2.00pm – 5.00pm

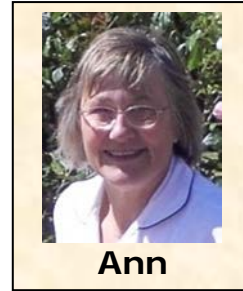
Manicure sessions for residents

Wednesday 29<sup>th</sup> February  
10.30 – 11.30am

**P.A.T. (Pets As Therapy) DOG VISIT**  
Claire and Theo (cocker spaniel) will be  
visiting this morning.

2.30pm Activity Room

**GENTLE EXERCISES TO MUSIC**  
Followed by afternoon tea.



## **THE SOCIAL ACTIVITIES TEAM**

<b>Monday</b>	<b>Caroline, Carol &amp; Julia</b>
<b>Tuesday</b>	<b>Caroline, Carol &amp; Julia</b>
<b>Wednesday</b>	<b>Ann, Carol &amp; Julia</b>
<b>Thursday</b>	<b>Caroline, Ann, Carol &amp; Julia</b>
<b>Friday</b>	<b>Ann, Carol &amp; Julia</b>
<b>Saturday</b>	<b>Ann &amp; Carol</b>
<b>Sunday</b>	<b>Julia</b>

## **PASTORAL CARE**

The Rev Judy Potter has retired and we are in the process of appointing a new chaplain. Father David Osborne takes Mass once a month.

## **HAIRDRESSING**

Lisa Ward is available from Monday-Thursday by prior arrangement. Please speak to the Staff Nurse to book an appointment.

## **MANICURES** (usually Tuesday and Wednesday afternoons)

To avoid any misunderstandings, manicures are available only for the Nursing Home residents.

## **MASSAGE THERAPY DAYS**

Val Hutton will be available for treatments on Tuesdays and Thursdays by prior arrangement.

## **HOLIDAYS**

Ann will be away from 11<sup>th</sup> February – 17<sup>th</sup> February inclusive  
Caroline & Simon will be away from 28<sup>th</sup> February – 16<sup>th</sup> March inclusive.

Important  
DATE!

## RESIDENTS' OUTING

We are organising an outing to  
**GUILDFORD CATHEDRAL**  
on Thursday 22<sup>nd</sup> March



Depart at 2.00pm

Return at 5.00pm

Please book early as numbers are limited!

[www.birtleyhouse.co.uk](http://www.birtleyhouse.co.uk)